

# FREELANDER STAINLESS STEEL FAST FIT SIDE BAR FITTING INSTRUCTIONS

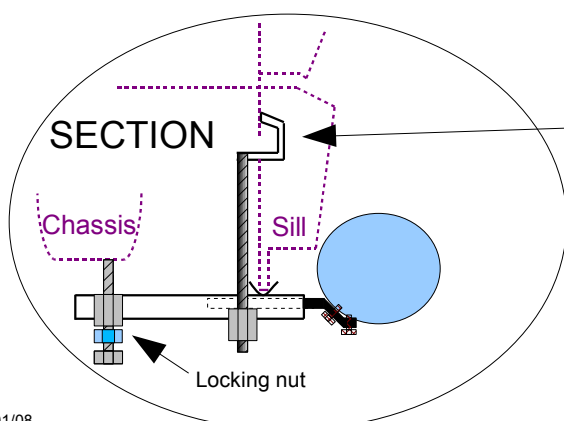
(All Models up to '07)

READ CAREFULLY BEFORE ATTEMPTING TO FIT



1. Remove the hooked bolts from the brackets. They are in the right order, but must be removed to be fitted.
2. Underneath the kick sills are five holes covered by paper tape and underseal (they can be difficult to see). Counting from the front of the car push the hooked retaining bolts horizontally (hooked points first) through the tape into the hollow sill section of holes 2 and 4. Turn the studs through 90 degrees and let them hang down (See diagram below).
3. Attach the four black brackets. Do not fully tighten – the locking bolt should be finger tight.
4. Fit tube to bracket with supplied M6 bolts. (10mm spanner)
5. Adjust rear bolt on each bracket for alignment. Tighten all nuts but do not over tighten. Test by hand load.

Note :- Fitting time 5 minutes per side. Requires 10mm and 17mm spanner. The tubes are made from 304 stainless steel and if looked after should last the life of the vehicle. See separate care sheet.



Stud shown fitted to underside of car. Hook fits in and is turned so as to prevent removal. The hooks can be pushed through the paper tape quite easily.